



Desktop & Application ◊ Virtualisation & Integration

XenApp 6.5 Deployment ISO

20th December 2015

Contents

1.	Introduction	4
1.1	Available Task Sequences	4
1.2	Available Applications.....	4
2.	Server Deployment	5
2.1	Create a virtual machine with the following hardware configuration.....	5
2.2	Deploy Windows Server 2008R2 (Service Pack 1)	5
2.3	Install Hypervisor Guest Operating System Tools / Agent.....	9
2.4	Run Windows Update.....	10
2.5	Install Anti-Virus Software	10

1. Introduction

The XenApp 6.5 Deployment ISO contains preconfigured deployment tasks enabling the unattended deployment of Windows Server 2008R2 Standard or Enterprise Edition (Service Pack 1) to virtual machine guests running on the following hypervisors.

- Microsoft Hyper-V 2008R2 (with [KB2744129](#) installed)
- Microsoft Hyper-V 2012R2
- VMWare ESX Server 5.x, 6.x
- Citrix XenServer 5.x, 6.x

The XenApp 6.5 Deployment ISO is created from a Media Collection using the [Microsoft Deployment Toolkit](#) 2013.

1.1 Available Task Sequences

Task Sequence	Microsoft Visual C++ for Visual Studio 2012	Microsoft Visual C++ for Visual Studio 2010, 2013	Microsoft Visual C++ for Visual Studio 2005, 2008, 2010, 2013	Microsoft Internet Explorer 8,9,10,11	Microsoft Silverlight 5	Windows Optimisations	Microsoft .Net Framework 4.5.2
Windows 2008R2 Server Enterprise Edition - Vanilla	x	x	x	x	x		
Windows 2008R2 Server Standard Edition - Vanilla	x	x	x	x	x		

Windows 2008R2 Server Enterprise Edition – Vanilla - Windows 2008R2 Server Enterprise Edition with no Roles or Features installed – Select XenApp Components during deployment

Windows 2008R2 Server Standard Edition – Vanilla - Windows 2008R2 Server Standard Edition with no Roles or Features installed – Select XenApp Components during deployment

1.2 Available Applications

Applications may be selected during deployment.

Applications	Microsoft Primary Interoperability Assemblies	Remote Desktop Session Host Role	Application Server Role	Citrix XenApp 6.5 Rollup Pack 6	IIS Role	RSAT Tools	Citrix AppCenter 6.5.0.6	Microsoft Windows RDS Updates
Citrix XenApp 6.5 - Worker Mode		x	x				x	x
Citrix XenApp 6.5 Data Collector	x	x	x	x	x	x	x	x
Citrix XenApp 6.5 Data Collector IIS XML Port Sharing	x	x	x	x	x	x	x	x

Microsoft Internet Explorer 9, 10 or 11 may also be selected during deployment.

2. Server Deployment

Approximate Deployment Times using SSD storage.

	Mins
Citrix XenApp 6.5 - Worker Mode	50
Citrix XenApp 6.5 Data Collector	50
Citrix XenApp 6.5 Data Collector IIS XML Port Sharing	55

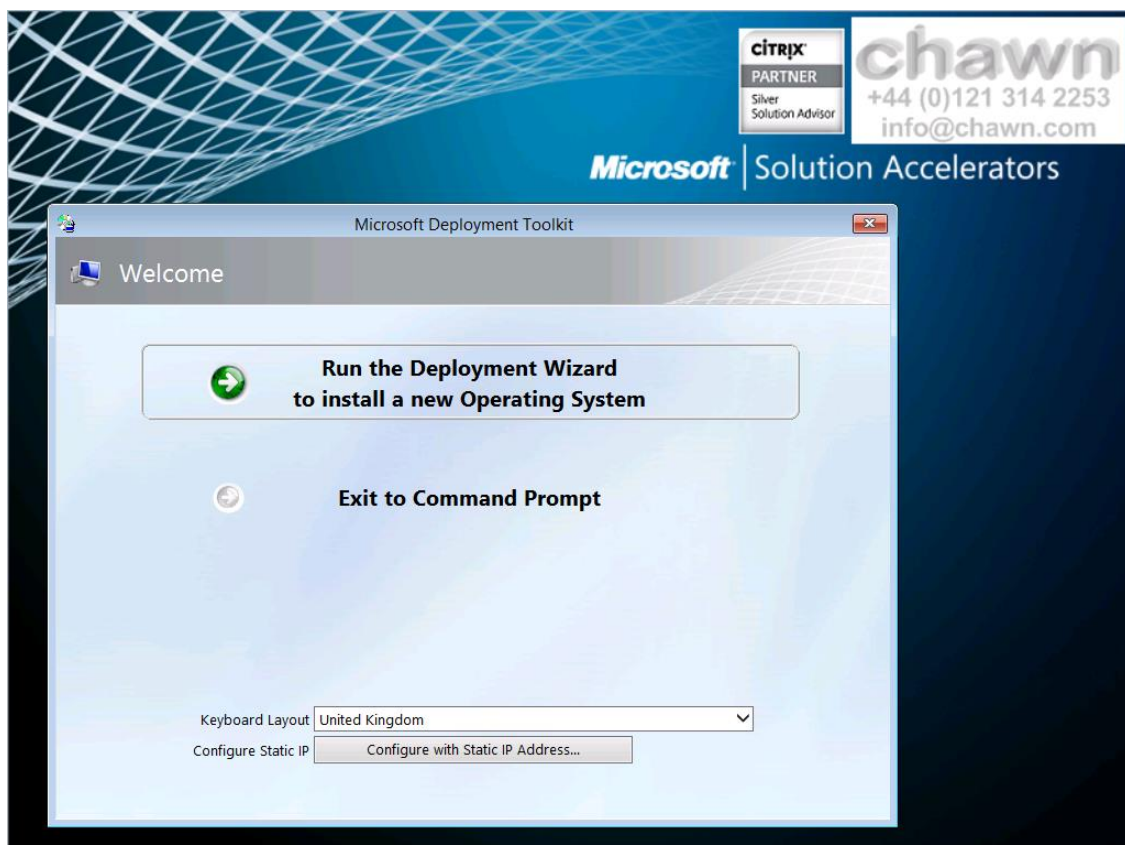
2.1 Create a virtual machine with the following hardware configuration.

	CPU		Mem		Disk		Nic	Allow additional space for applications
	Min	Rec	Min	Rec	Min	Rec	Min	
Citrix XenApp 6.5 - Worker Mode	2	4	4	16	20	60	1	
Citrix XenApp 6.5 Data Collector	1	2	2	4	20	50	1	
Citrix XenApp 6.5 Data Collector IIS XML Port Sharing	1	2	2	4	20	50	1	

- Set the operating system to Windows Server 2008R2 Standard
- Attach the CD/DVD-ROM to **CHAWN_XA76Builder.iso**
- If necessary set the BIOS to boot from CD/DVD-ROM first.
- Verify that the NIC is tagged with the correct VLAN.

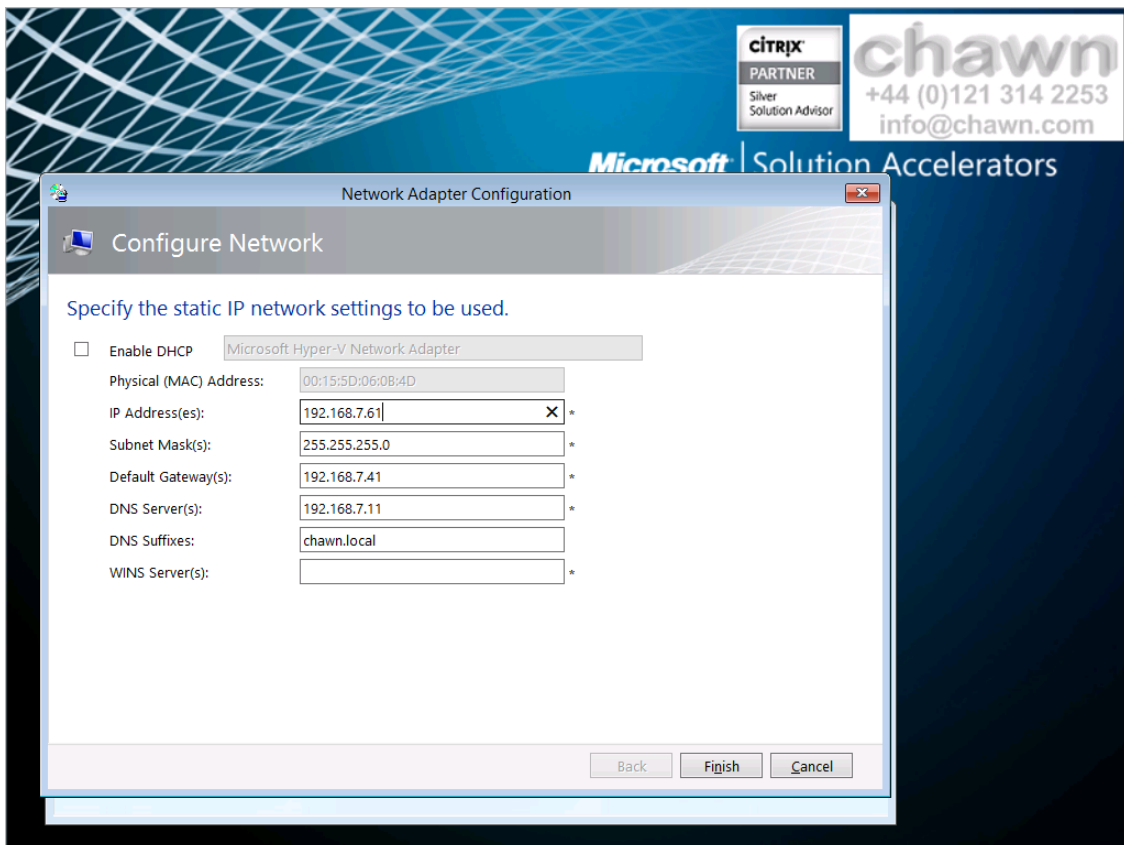
2.2 Deploy Windows Server 2008R2 (Service Pack 1)

Power on the virtual machine and press 'any key' to boot from CD/DVD-ROM.

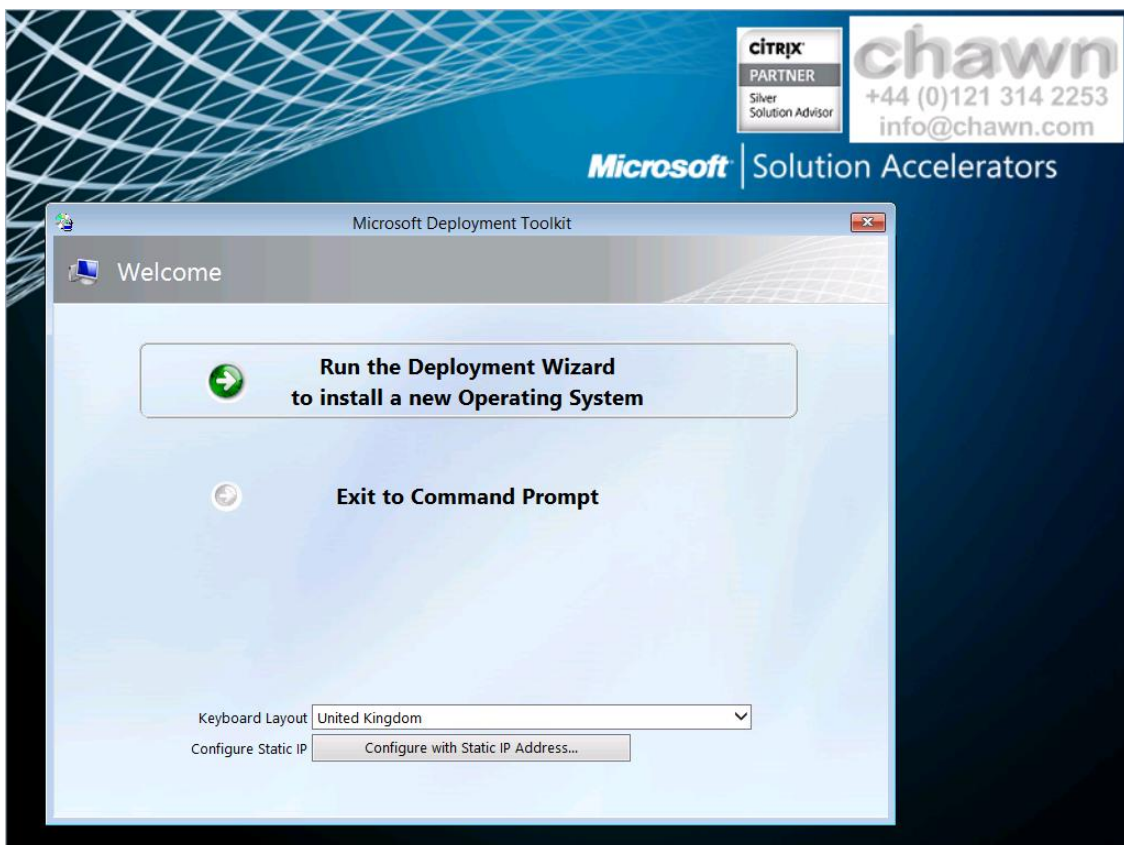


Click **Configure with Static IP Address...**

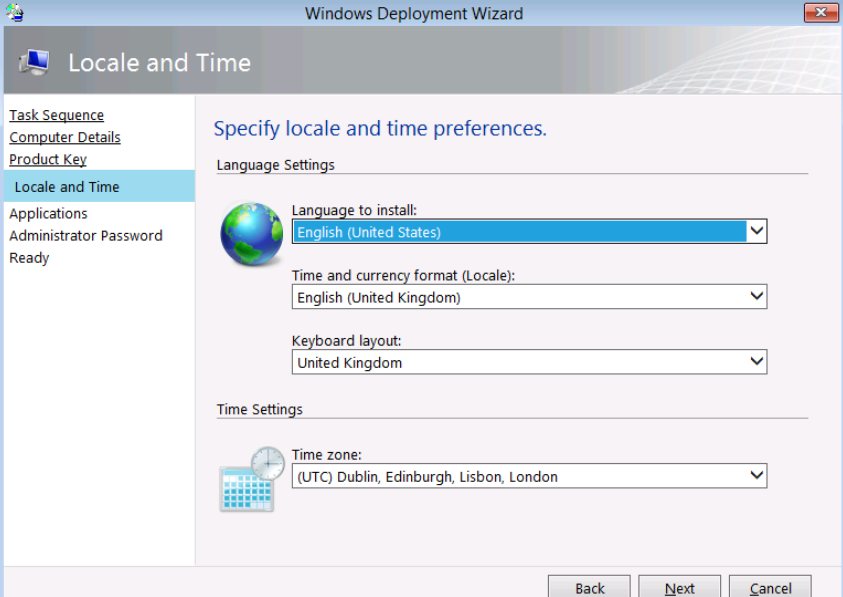
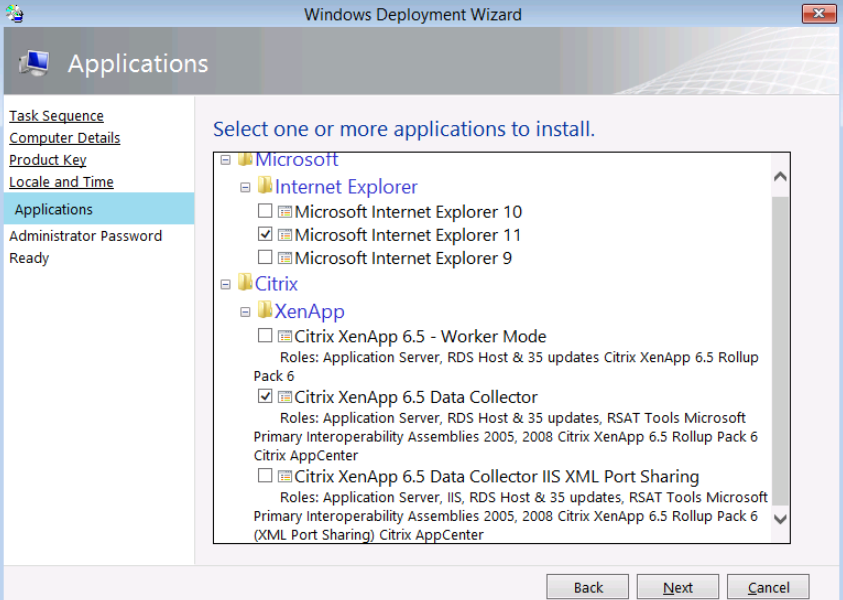

Configure the server with a Static IP Address.

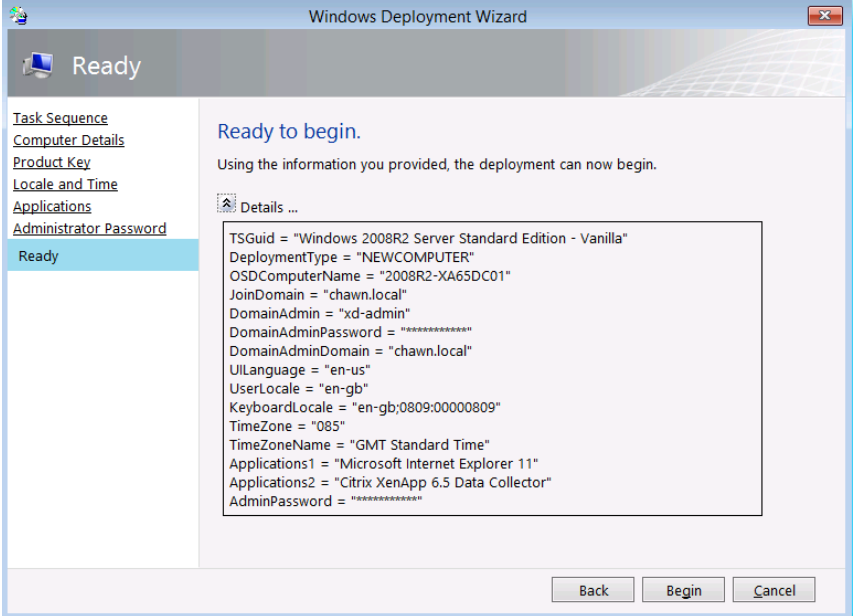



Click Run the Deployment Wizard to install a new Operating System.



<p>Task Sequence</p> <p>Select Windows 2008R2 Server Standard Edition or Enterprise Edition.</p> <p>Click Next.</p>	
<p>Computer Details</p> <p>Specify...</p> <p>Computer Name: _____</p> <p>Domain: _____</p> <p>User Name: _____</p> <p>Password: _____</p> <p>Domain: _____</p> <p>or</p> <p>WorkGroup: _____</p>	
<p>Product Key</p> <p>The Windows Server 2008 R2 Server Standard KMS Client Setup Key is the default value. Type an alternative Client Setup Key if required.</p> <p>Click Next.</p> <p>https://technet.microsoft.com/en-us/library/jj612867.aspx</p>	

<p>Locale and Time</p> <p>Enter preferred settings for your region.</p> <p>Click Next.</p>	
<p>Applications</p> <p>Microsoft Internet Explorer Optionally select to install Internet Explorer.</p> <p>Citrix XenApp 6.5 Optionally select to install Citrix XenApp as a Controller (with XML port sharing) or a Worker.</p> <p>Click Next.</p>	
<p>Administrator Password</p> <p>Specify the Administrator Password.</p> <p>The Task Sequence will reboot multiple times during deployment and will use these credentials to auto-logon to the server and perform the next sequence step.</p> <p>Click Next.</p>	

<p>Ready</p> <p>Review the Task Sequence information and click Begin.</p>	
<p>Registration and Agreement</p> <p>Complete the <i>Registered User</i> and <i>Registered Organisation</i> fields and click Continue.</p>	

2.3 Install Hypervisor Guest Operating System Tools / Agent

Install the appropriate guest operating system tools for the hypervisor platform.

Microsoft Hyper-V 2012R2

[Install Integration Services for Hyper-V](#)

Microsoft System Center Virtual Machine Manager Guest Agent

< VMM installation folder >\agents\Guest\amd64\vmGuestAgent.msi

[Rollup Pack 7 for the SCVMM Guest Agent KB3078315 / KB3066340](#)

Citrix XenServer Guest Tools

Attach the Windows PV drivers ISO to the VM by using the Install Tools menu in XenCenter, or by directly attaching the built-in xs-tools.iso ISO image on the VM using the CLI. Once the ISO is attached, double click on the installwizard.msi installer executable and follow the on-screen prompts.

VMWare Tools

[General VMware Tools installation instructions \(1014294\)](#)

- Reboot when complete.

2.4 Run Windows Update

Run Windows Update until no further updates are available.

2.5 Install Anti-Virus Software



[Citrix Guidelines for Antivirus Software Configuration](#)

[Citrix Consolidated List of Antivirus Exclusions](#)

[Virus scanning recommendations for Enterprise computers that are running currently supported versions of Windows](#)